

N
SCALE = 1:2000

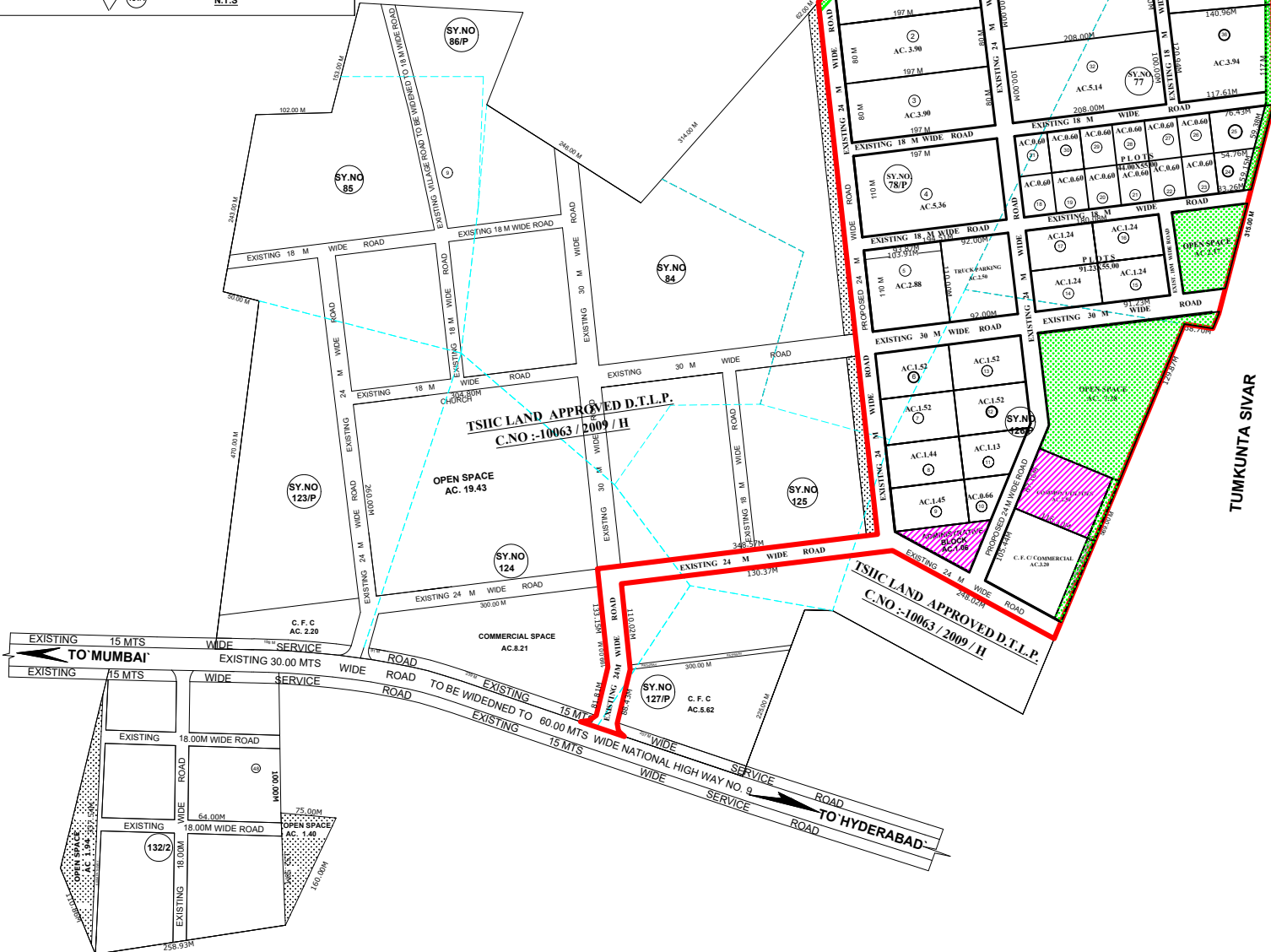
T.S.I.L.C. LTD HYDERABAD

**PROPOSED LAYOUT PLAN FOR
INDUSTRIAL PARK (PH-1) IN SURVEY NO'S
78(P), 77,124(P), 125(P) &126 (P), SITUATED AT
BUCHINELLY VILLAGE , ZAHEERABAD
MANDAL, MEDAK -DISTRICT,**

LAND USE ANALYSIS

LAYOUT BOUNDARY :		
EXISTING ROADS :		
PROPOSED ROADS :		
TOTAL LAYOUT AREA	122.49AC	100.00%
PLOTTED AREA :	77.81 AC	63.52%
ROADS AREA :	25.58AC	20.88%
OPEN SPACE AREA	12.34AC	10.08%
C F C/ COMMERCIAL	03.20AC	2.61%
COMMON UTILFTIES	03.56AC	2.91%

TOTAL NO.OF PLOTS : 36 Nos (INCL.BI NUMBERS)



TUMKUNTA SVAR

BURURIDIPPO SVAR

T.S.I.L.C. LAND APPROVED D.T.L.P.
C.No. :10063 / 2009 / H

T.S.I.L.C. LAND APPROVED D.T.L.P.
C.No. :10063 / 2009 / H